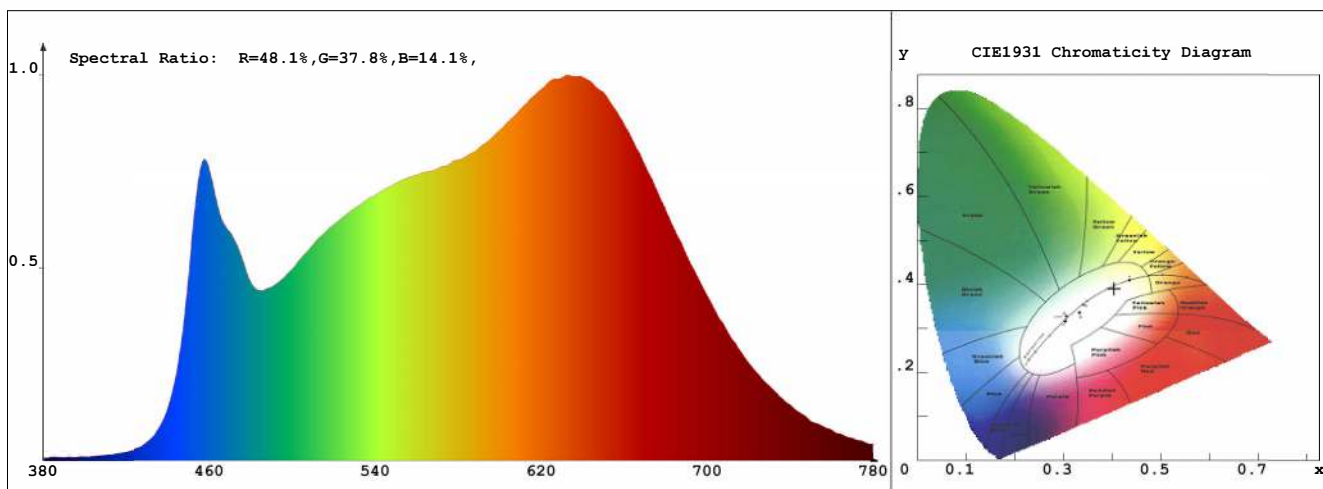


Luminaire test report

Product Mark

Product Type : Ruban 1m - ES-FS2835C-120-24-Y Manufacturer : Lumen Warm Inc.
 Temperature : 21'C Humidity : 43%
 Operator : NDR Test Date : 2019-11-19
 Remark: nominal CCT 3500K



Chroma Parameters

Chro.Coord.:x=0.4037 y=0.3902 u=0.2349 v=0.3406 duv=0.0001
 CCT: 3531K Dominant Wave.:580.7nm Purity:38.3% Centre Wave:596.2nm
 Flux RGB Ratio:R=21.6%,G=75.4%,B=3.0% Peak Wave:632.7nm Half Width:192.5nm

Rendering Index:Ra= 96.4 CRI= 95.7

R1 =98	R2 =98	R3 =99	R4 =95	R5 =96	R6 =96	R7 =95	R8 =96
R9 =97	R10=97	R11=98	R12=78	R13=98	R14=99	R15=96	

Fidelity Index (Rf)=89.0 Gamut Index (Rg)=96.8

Photo Parameters

Flux:1110.25lm Effi.:77.1lm/W Radiant:3979.7mW Iv:0.0mcd
 Efficiency:0.17 Effi Level:A (EU 874-2012)

Ele. Parameters

Voltage:U=24.00V Current:I=0.6000A
 Power:P=14.400W Power Factor:PF=1.000

Instrument state

Instrument:Hopoo HP8000 Integral Time: 132.816ms VPeak: 14809
 VDark: 1222 Scan Range: 380-780nm Product ID: 201901623

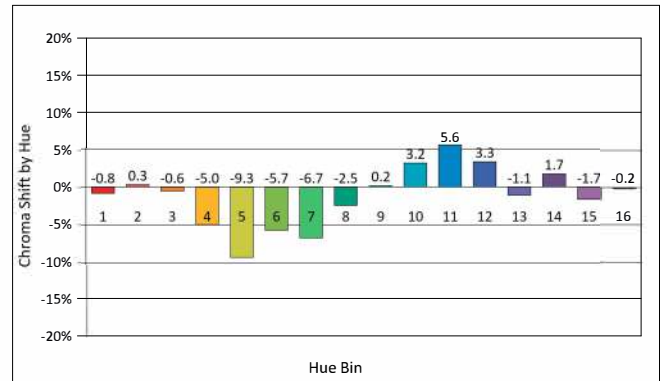
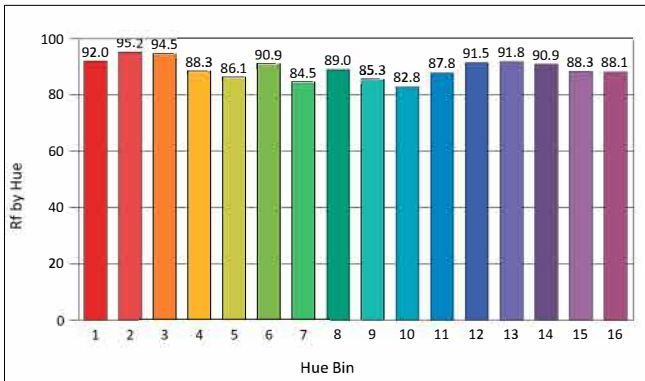
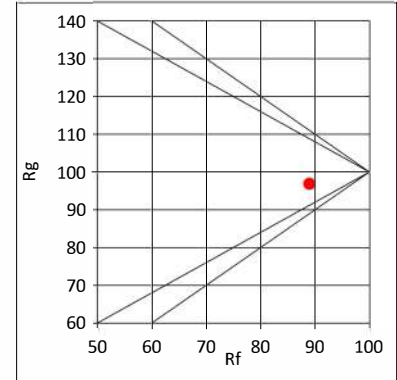
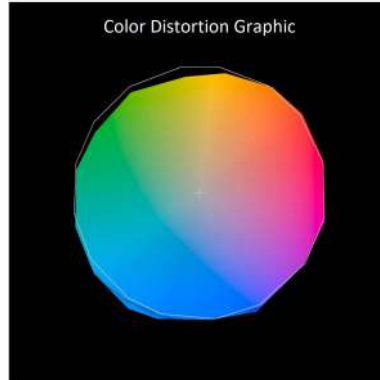
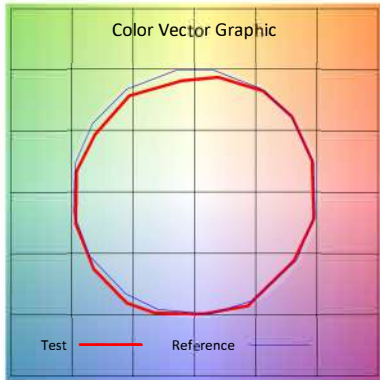
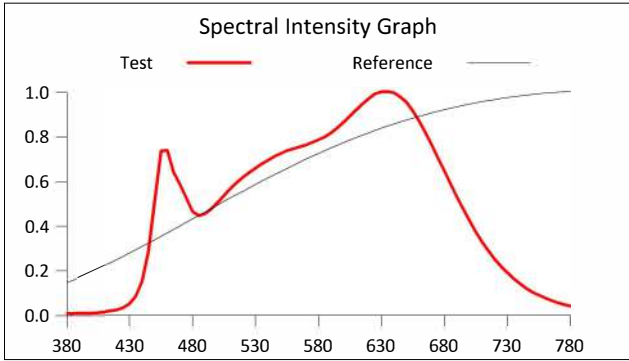
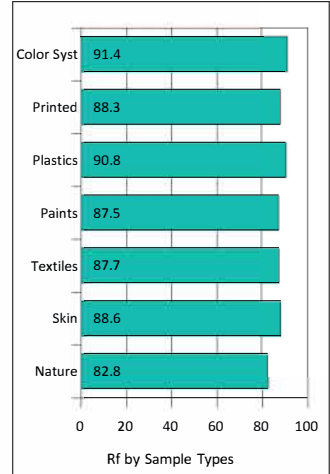
IES TM-30-2015 Test Report

Product Mark

Product Type : Ruban 1m - ES-FS2835C-120-24-Y Manufacturer : Lumen Warm Inc.
 Temperature : 21'C Humidity : 43%
 Operator : NDR Test Date : 2019-11-19
 Remark: nominal CCT 3500K

Rf: 89.0 CCT(K): 3531 u': 0.2349
 Rg: 96.8 LER: 269.7 Duv: 0.0001 v': 0.3406

Hue Bin	Rf	Graphic Shifts (%)	
		Chroma	Hue
1	92.0	-0.8%	2.0%
2	95.2	0.3%	-0.9%
3	94.5	-0.6%	-2.4%
4	88.3	-5.0%	-4.6%
5	86.1	-9.3%	-2.5%
6	90.9	-5.7%	1.3%
7	84.5	-6.7%	6.5%
8	89.0	-2.5%	6.3%
9	85.3	0.2%	9.1%
10	82.8	3.2%	10.4%
11	87.8	5.6%	5.1%
12	91.5	3.3%	-2.1%
13	91.8	-1.1%	-5.3%
14	90.9	1.7%	-5.1%
15	88.3	-1.7%	-1.7%
16	88.1	-0.2%	-2.8%



IES TM-30-2015 Test Report

Product Mark

Product Type : Ruban 1m - ES-FS2835C-120-24-Y Manufacturer : Lumen Warm Inc.

Temperature : 21'C

Humidity : 43%

Operator : NDR

Test Date : 2019-11-19

Remark: nominal CCT 3500K

