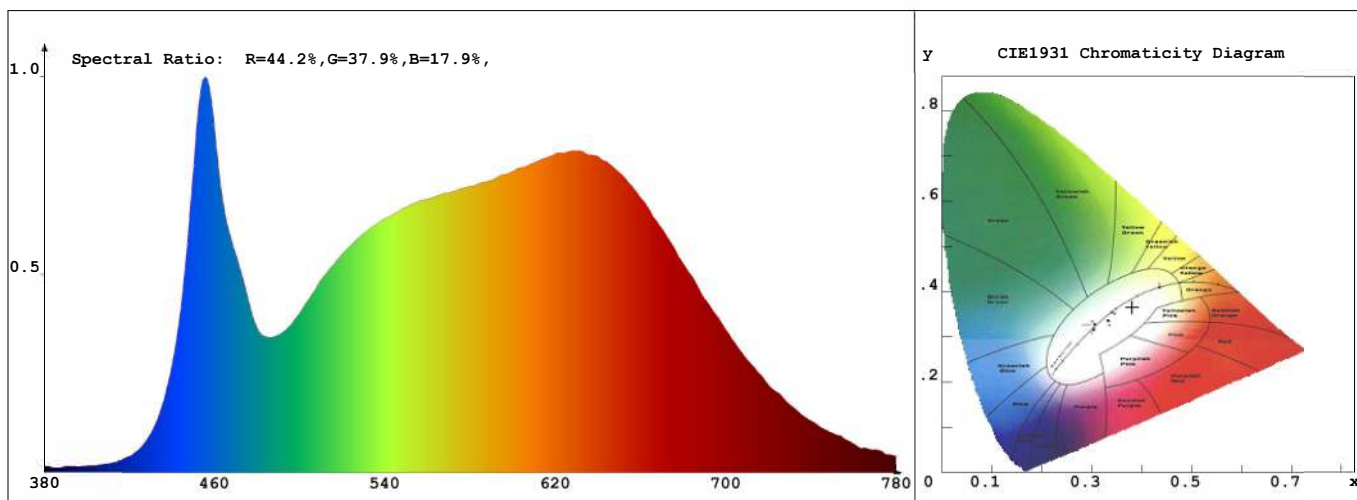


# Luminaire test report

## Product Mark

Product Type: CV-24V-10W-CCT-280, 500mm-30+50K Manufacturer : Lumen Warm Inc.  
 Temperature : 20'C Humidity : 22%  
 Operator : NDR Test Date : 2020-03-18 11:22:25  
 Remark: 0.5 m long sample. Middle config (black-yellow-white cables)



## Chroma Parameters

Chro.Coor.: x=0.3804 y=0.3653 u=0.2298 v=0.3309 duv=-0.0055  
 CCT: 3911K Dominant Wave.: 582.9nm Purity: 23.8% Centre Wave: 458.8nm  
 Flux RGB Ratio: R=20.1%, G=76.8%, B=3.2% Peak Wave: 455.6nm Half Width: 26.9nm

## Rendering Index: Ra= 96.0 CRI= 94.5

R1 =98 R2 =99 R3 =96 R4 =95 R5 =96 R6 =94 R7 =96 R8 =95  
 R9 =90 R10=95 R11=94 R12=74 R13=99 R14=98 R15=98  
 Fidelity Index (Rf)=89.7 Gamut Index (Rg)=99.9

## Photo Parameters

Flux: 644.34lm Effi.: 86.1lm/W Radiant: 2288.6mW Iv: 0.0mcd  
 Efficiency: 0.14 Effi Level: A+ (EU 874-2012)

## Ele. Parameters

Voltage: U=24.00V Current: I=0.3120A  
 Power: P=7.488W Power Factor: PF=1.000

## Instrument state

Instrument: Hopoo HP8000 Integral Time: 214.258ms VPeak: 14825  
 VDark: 1254 Scan Range: 380-780nm Product ID: 201901623

# IES TM-30-2015 Test Report

**Product Mark**

Product Type : CV-24V-10W-CCT-280, 500mm-30+50K Manufacturer : Lumen Warm Inc.

Temperature : 20 °C

Humidity : 22%

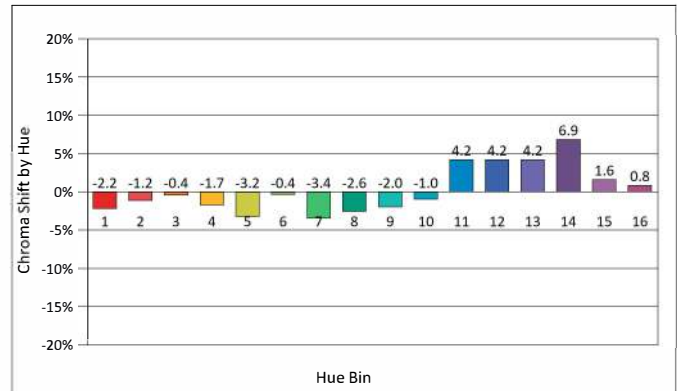
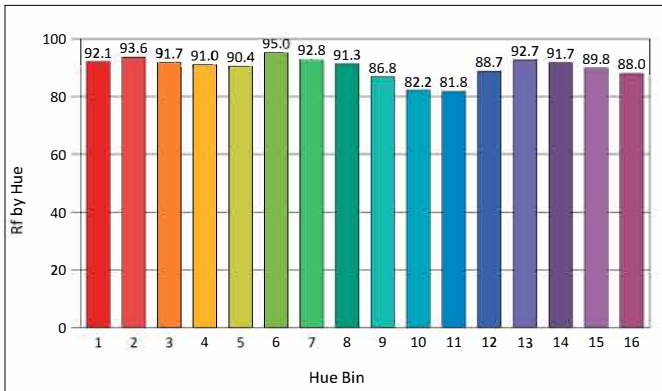
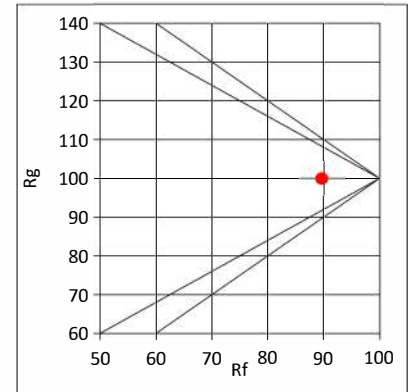
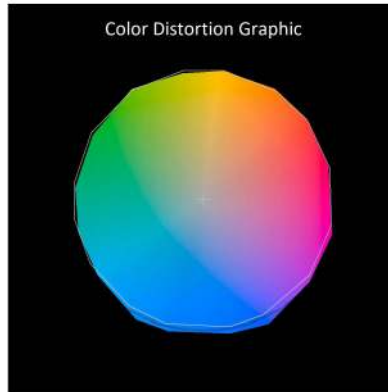
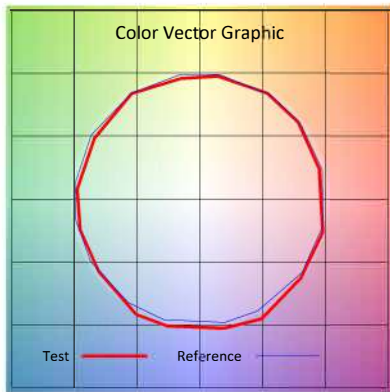
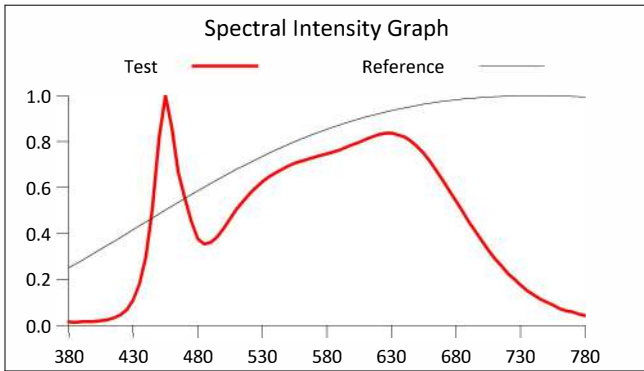
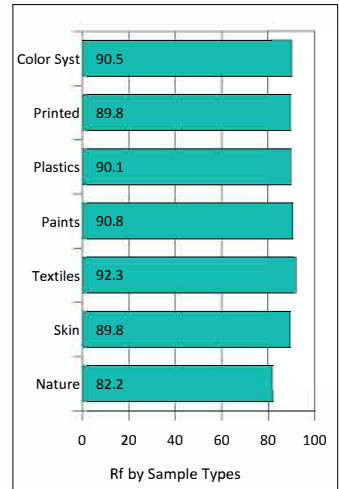
Operator : NDR

Test Date : 2020-03-18 11:22:25

Remark: 0.5 m long sample. Middle config (black-yellow-white cables)

Rf: 89.7                      CCT(K): 3911                      u': 0.2298  
 Rg: 99.9                      LER: 268.8                      Duv: -0.0055                      v': 0.3309

Hue Bin	Graphic Shifts (%)		
	Rf	Chroma	Hue
1	92.1	-2.2%	1.0%
2	93.6	-1.2%	1.7%
3	91.7	-0.4%	3.1%
4	91.0	-1.7%	1.3%
5	90.4	-3.2%	0.7%
6	95.0	-0.4%	-0.1%
7	92.8	-3.4%	0.9%
8	91.3	-2.6%	3.6%
9	86.8	-2.0%	8.6%
10	82.2	-1.0%	10.0%
11	81.8	4.2%	10.4%
12	88.7	4.2%	3.8%
13	92.7	4.2%	-1.3%
14	91.7	6.9%	-1.0%
15	89.8	1.6%	-3.7%
16	88.0	0.8%	-5.6%



# IES TM-30-2015 Test Report

**Product Mark**

Product Type : CV-24V-10W-CCT-280, 500mm-30+50K Manufacturer : Lumen Warm Inc.

Temperature : 20°C

Humidity : 22%

Operator : NDR

Test Date : 2020-03-18 11:22:25

Remark: 0.5 m long sample. Middle config (black-yellow-white cables)

