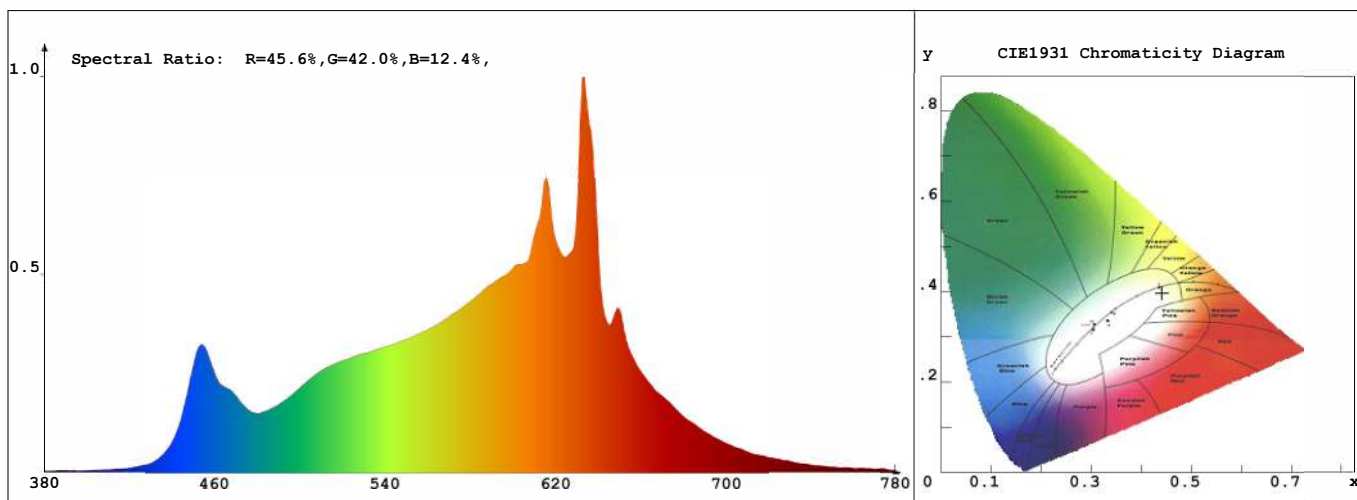


Luminaire test report

Product Mark

Product Type : CVIC-24V-11.52W-CT-128(2835) Manufacturer : Lumen Warm Inc.
 Temperature : 20'C Humidity : 22%
 Operator : NDR Test Date : 2020-03-17 16:45:30
 Remark:



Chroma Parameters

Chro.Coor.:x=0.4405 y=0.3965 u=0.2562 v=0.3459 duv=-0.0035
 CCT: 2879K Dominant Wave.:584.6nm Purity:51.2% Centre Wave:618.7nm
 Flux RGB Ratio:R=25.4%,G=72.5%,B=2.1% Peak Wave:632.3nm Half Width:42.1nm

Rendering Index:Ra= 94.0 CRI= 93.1

R1 =99 R2 =98 R3 =97 R4 =97 R5 =98 R6 =92 R7 =90 R8 =83
 R9 =65 R10=98 R11=98 R12=85 R13=99 R14=99 R15=93
 Fidelity Index(Rf)=90.9 Gamut Index(Rg)=99.6

Photo Parameters

Flux:1374.03lm Effi.:127.2lm/W Radiant:4200.1mW Iv:0.0mcd
 Efficiency:0.11 Effi Level:A++ (EU 874-2012)

Ele. Parameters

Voltage:U=24.00V Current:I=0.4500A
 Power:P=10.800W Power Factor:PF=1.000

Instrument state

Instrument:Hopoo HP8000 Integral Time: 74.839ms VPeak: 16089
 VDark: 1204 Scan Range: 380-780nm Product ID: 201901623

IES TM-30-2015 Test Report

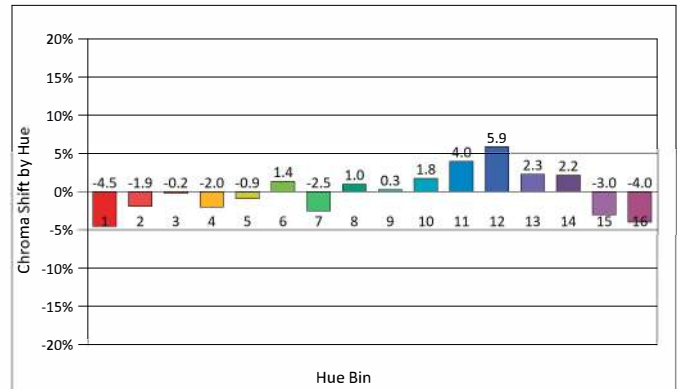
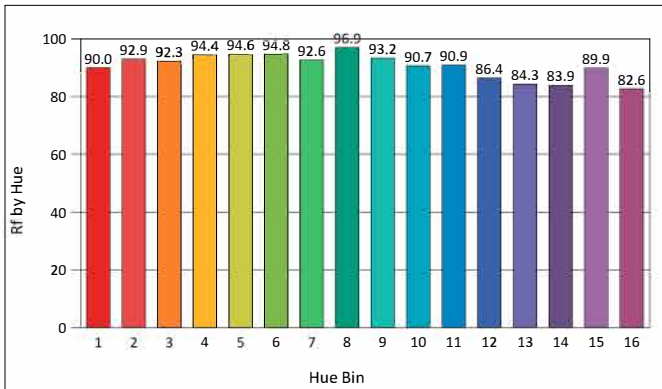
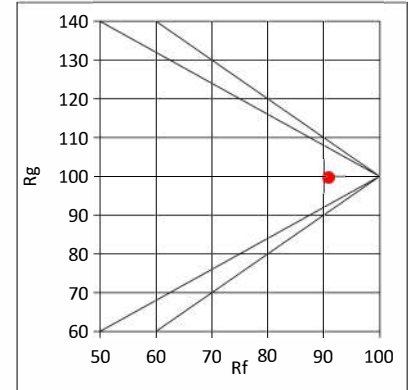
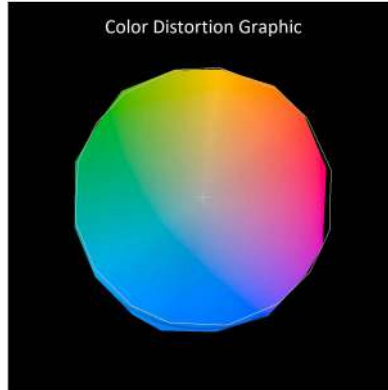
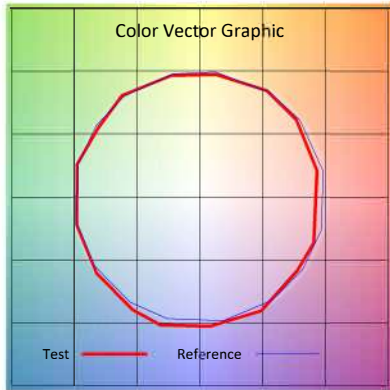
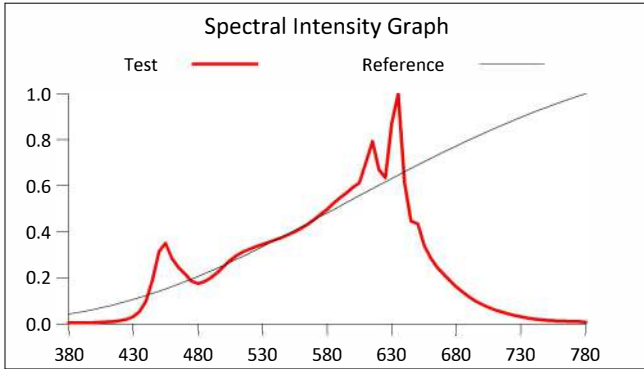
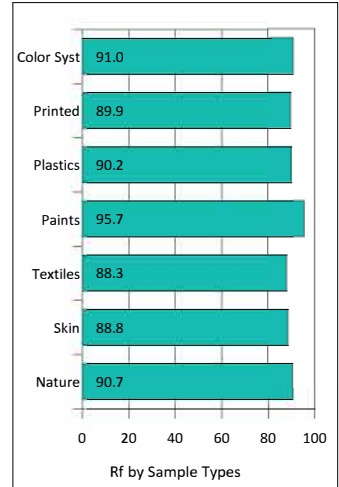
Product Mark

Product Type : CVIC-24V-11.52W-CT-128 (2835)
 Temperature : 20 °C
 Operator : NDR
 Remark:

Manufacturer : Lumen Warm Inc.
 Humidity : 22%
 Test Date : 2020-03-17 16:45:30

Rf: 90.9 CCT(K): 2879 u': 0.2562
 Rg: 99.6 LER: 314.3 Duv: -0.0035 v': 0.3459

Hue Bin	Graphic Shifts (%)		
	Rf	Chroma	Hue
1	90.0	-4.5%	1.2%
2	92.9	-1.9%	2.4%
3	92.3	-0.2%	3.2%
4	94.4	-2.0%	-0.9%
5	94.6	-0.9%	1.4%
6	94.8	1.4%	0.8%
7	92.6	-2.5%	0.8%
8	96.9	1.0%	1.0%
9	93.2	0.3%	3.8%
10	90.7	1.8%	5.0%
11	90.9	4.0%	4.7%
12	86.4	5.9%	-4.1%
13	84.3	2.3%	-10.8%
14	83.9	2.2%	-11.8%
15	89.9	-3.0%	-3.2%
16	82.6	-4.0%	-11.4%



IES TM-30-2015 Test Report

Product Mark

Product Type : CVIC-24V-11.52W-CT-128(2835)

Manufacturer : Lumen Warm Inc.

Temperature : 20'C

Humidity : 22%

Operator : NDR

Test Date : 2020-03-17 16:45:30

Remark:

