



QUICKSHIP PROGRAM

24H-72H LEAD TIME

LUMEN
WARM

HOW TO PROCEED



Send all Quickship orders to:
quickship@lumenwarm.com

The purchase order must contain the following informations:

1. **Complete product codes as per Quickship specification sheets**
2. **Contact name and phone number for reception**
3. **Shipping instructions and site restrictions clearly indicated**
4. **Appropriate shipping fees**

Payment agreements must be completed before shipping. Accepted payment methods are:

- Credit card
- Wire transfer (existing accounts only)

Existing and approved accounts are subject to agreed upon credit terms.



EXPEDITED

Shipped in 24 to 72hrs
after order
confirmation



QUANTITY

Maximum quantity
indicated on every
product page



AVAILABILITY

Refer to the website
before ordering

See availability

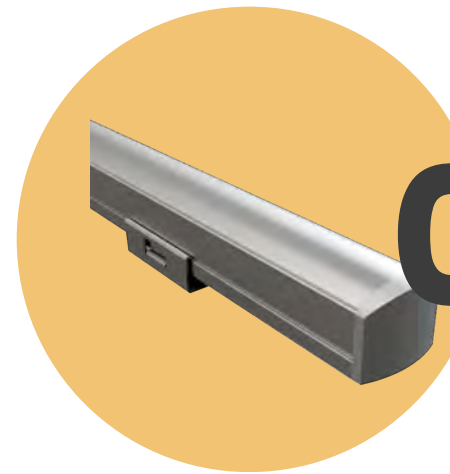




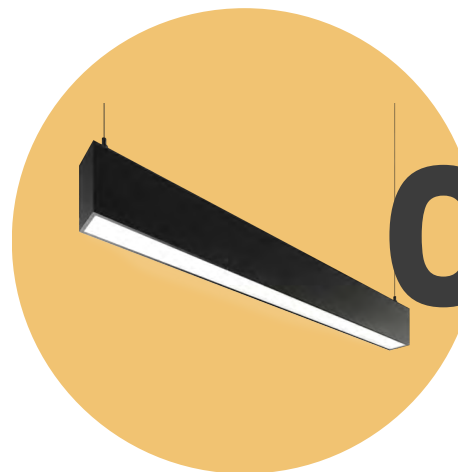
PRODUCTS OVERVIEW



01 DOWNLIGHTS



03 LOW VOLTAGE LINEARS



02 LINE VOLTAGE LINEARS



LIMITED TIME OFFER

This logo identifies products available for a limited time only

Refer to our [website](#) for inventory availability



Cutout Ø2.95"

DESFIOU RECESSED DOWNLIGHT

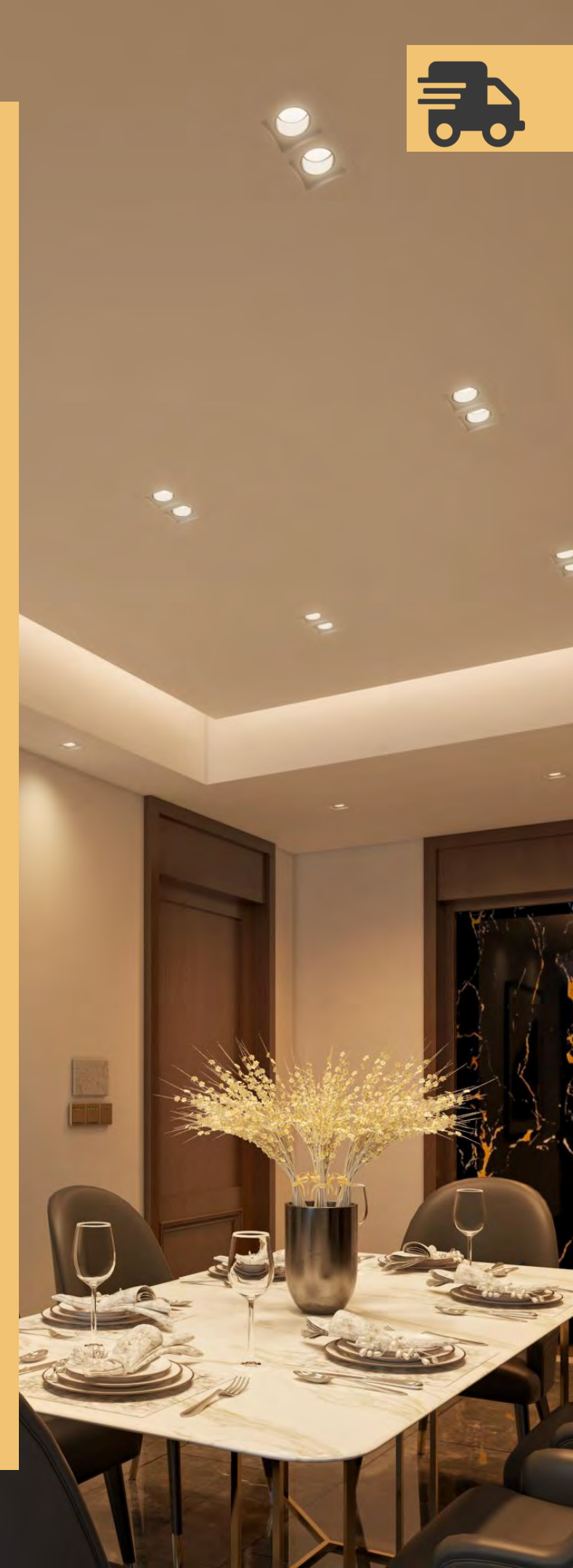
- Aperture of 3in
- Round matte white trim finish
- Fixed
- Matte white round beveled
- 42° optics
- 1000lm delivered, 12W
- IP20 rated
- Driver 120-277 VAC included compatible with ELV, Triac and 0-10V (1%) dimming

[Product page link](#)

CCT	Installation & Dimensions	Codes	Maximum quantity
3000K	Remodel: None 3.82" height	QS-LWDE-3IN-RD-RT-MWH-NT-RB-MWH-42-30K-12W-IP20-NA	50 units
3500K		QS-LWDE-3IN-RD-RT-MWH-NT-RB-MWH-42-35K-12W-IP20-NA	
3000K	New Construction Non-IC: Mounting Plate with Hanger Bars 11.88" W x 8.5" D x 4.75" H	QS-LWDE-3IN-RD-RT-MWH-NT-RB-MWH-42-30K-12W-IP20-MPHB	
3500K		QS-LWDE-3IN-RD-RT-MWH-NT-RB-MWH-42-35K-12W-IP20-MPHB	
3000K	New Construction IC: Airtight Enclosure Housing 12.75" W x 14.19"-26" D x 4.75" H	QS-LWDE-3IN-RD-RT-MWH-NT-RB-MWH-42-30K-12W-IP20-AC5	
3500K		QS-LWDE-3IN-RD-RT-MWH-NT-RB-MWH-42-35K-12W-IP20-AC5	

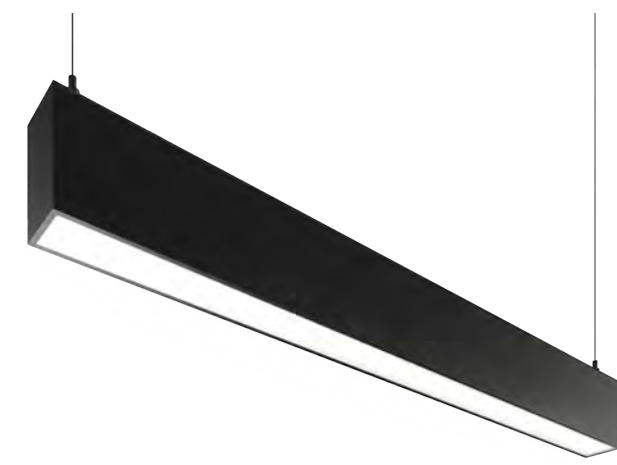
**Regular shipping is ground, contact factory for premium air shipping*

Explore product availability on our [website](#)





EROS DIRECT LINE VOLTAGE LINEAR



1.89" width x 3.15" height

- Suspended installation
- 4 feet in length
- Direct white frosted lens
- 1990lm delivered direct
- Flat round canopy
- 9 feet adjustable suspension kit
- Integral driver 120-277 VAC included compatible with ELV, Triac and 0-10V (1%) dimming

[Product page link](#)

Finish	CCT	Codes	Maximum quantity
Matte White	3000K	QS-LWERSD-SPD-48IN-MWH-DLFR-P600-30K-WHD-FRD-MWH-9SK	10 units
	3500K	QS-LWERSD-SPD-48IN-MWH-DLFR-P600-35K-WHD-FRD-MWH-9SK	
Matte Black	3000K	QS-LWERSD-SPD-48IN-MBK-DLFR-P600-30K-BKD-FRD-MBK-9SK	
	3500K	QS-LWERSD-SPD-48IN-MBK-DLFR-P600-35K-BKD-FRD-MBK-9SK	

**Regular shipping is ground, contact factory for premium air shipping*

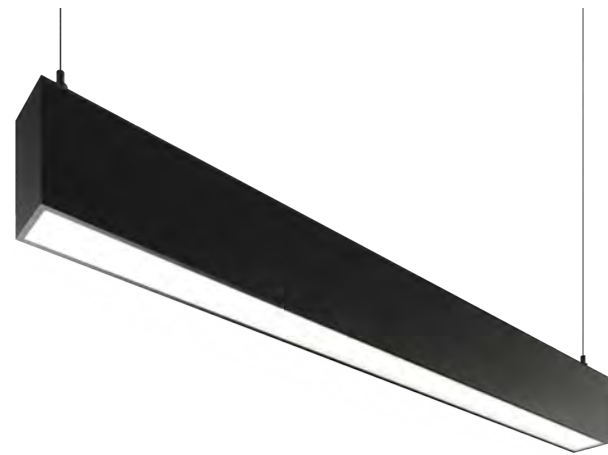
Explore product availability on our [website](#)





EROS DIRECT/INDIRECT

LINE VOLTAGE LINEAR



1.89" width x 3.15" height

- Suspended installation
- 4 feet in length
- Direct and indirect white frosted lenses
- 1990lm delivered direct
- 1160lm delivered indirect
- 2 independent circuits
- Flat round canopy
- 9 feet adjustable suspension kit
- Integral driver 120-277 VAC included compatible with ELV, Triac and 0-10V (1%) dimming

[Product page link](#)

Finish	CCT	Codes	Maximum quantity
Matte White	3000K	QS-LWERSDI-SPD-48IN-MWH-DLFR-P600-30K-ULFR-P350-30K-WHD-FRD-MWH-9SK-X10V	10 units
	3500K	QS-LWERSDI-SPD-48IN-MWH-DLFR-P600-35K-ULFR-P350-35K-WHD-FRD-MWH-9SK-X10V	
Matte Black	3000K	QS-LWERSDI-SPD-48IN-MBK-DLFR-P600-30K-ULFR-P350-30K-BKD-FRD-MBK-9SK-X10V	
	3500K	QS-LWERSDI-SPD-48IN-MBK-DLFR-P600-35K-ULFR-P350-35K-BKD-FRD-MBK-9SK-X10V	

**Regular shipping is ground, contact factory for premium air shipping*

Explore product availability on our [website](#)





0.67" width x 0.58" height

DOBY LOW VOLTAGE LINEAR

- 4 feet in length
- Clear anodized finish
- White opal lens
- Surface mounted bracket installation
- 725lm delivered, 10.5W
- FT4 cable 6 feet lead in, no lead out
- Lead placed at extremity
- IP20 rated
- Factory assembled using light source increments

[Product page link](#)

Finish	CCT	Codes	Maximum quantity
Clear Anodized	3000K	QS-LWDY-48IN-ACL-WO-SMDBK-HPC290-30K-FT46FT-NA-EXT-IP20-FAI	20 units
	3500K	QS-LWDY-48IN-ACL-WO-SMDBK-HPC290-35K-FT46FT-NA-EXT-IP20-FAI	

- Driver 120-277 VAC compatible with ELV, Triac and 0-10V (Order only with Doby fixtures)

Wattage	Maximum Number of Fixtures	Codes	Maximum quantity
30W	2 fixtures	LW-DIM-TRC-0-10V-100-277VAC-CV-24V-30W-IP67-JBX	Order only with Doby fixtures
60W	5 fixtures	LW-DIM-TRC-0-10V-100-277VAC-CV-24V-60W-IP67-JBX	
96W	8 fixtures	LW-DIM-TRC-0-10V-100-277VAC-CV-24V-96W-IP67-JBX	

*Regular shipping is ground, contact factory for premium air shipping

Explore product availability on our [website](#)



TERMS AND CONDITIONS



- Quickship items must be submitted separately from standard items, otherwise a separate PO will be requested, resulting in possible delays in processing the orders.
- Quickship orders must be complete to avoid delays in processing and shipment.
- New customers are required to pay before shipping. Payments can be made via Lumen Warm approved methods:
 - Credit card
 - Wire transfer (existing accounts only)
- Shipping instructions must be complete including: accessibility by 53' freight and dock with forklift, if a tailgate is needed, if residential address, receiving hours/days and if prior notification is required in order to avoid delays in processing.
- Quickship orders will ship from our facility within 72 regular business hours (excluding weekends & holidays). The exact lead time is estimated upon order confirmation.
- All Quickship orders received after 12pm EST, on weekends and on holidays, will be processed on the next business day.
- Quickship orders can not be cancelled at any time. Changes of any kind will reset the clock on the 72 hours shipping time for that particular Quickship order.
- Program terms are in conjunction with Lumen Warm's Terms and Conditions. In the event of any inconsistency between the provisions of this section and the rest of the standard Terms, the provisions of this section shall prevail regarding the Quickship Program.
- Lumen Warm may cancel or modify the Quickship Program or change its eligibility conditions at any time without notice. Lumen Warm reserves the right to modify at its discretion the products that are eligible for the Quickship Program.
- Please refer to the specification sheets for further details on each product. Note that only the options listed in those documents are available for Quickship. Additional product options are available but are subject to our standard shipping and lead times.
- Lumen Warm won't authorize the partial shipment of Quickship orders, nor allow any hold of release.
- Pricing will be based on the latest Lumen Warm Quickship price list.
- The Quickship Program is only available in North American territories.
- Occasional offer products available for a limited time, refer to the web page for availability.

