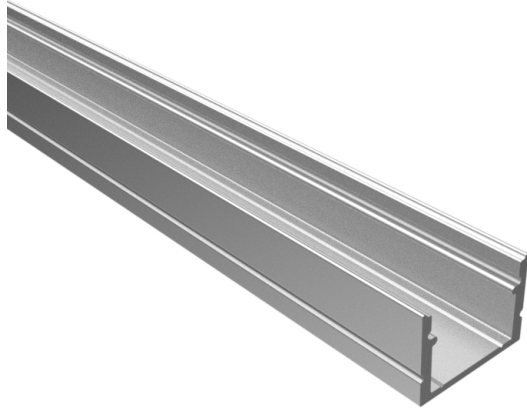


# Doby Profile

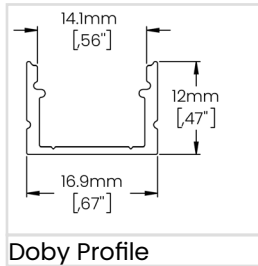
Available in a variety of light intensities and application methods, our Low Voltage Linear Solutions are widely versatile. They can be used either for their functionality, as design elements in a room or both.



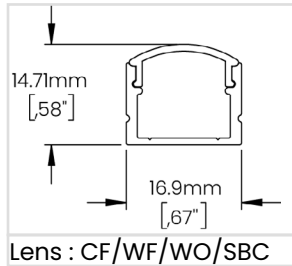
## Highlights

<b>Mounting</b>	Surface Mounted in groove with Brackets or Double Sided Tape
<b>Material</b>	Aluminum Extrusion (6063-T5)
<b>Features</b>	Thin, discreet, versatile, optimal diffusion, easy to install
<b>Recommended for</b>	Cove lighting, under cabinet & woodworks

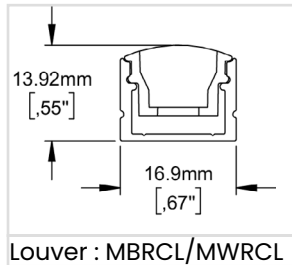
## Dimensions



Doby Profile



Lens : CF/WF/WO/SBC



Louver : MBRCL/MWRCL

## Aluminum Profile Colour



ACL - Clear Anodized



MBK - Matte Black



MWH - Matte White



CU - Custom; Specify RALK7 colour

## Ordering Guide

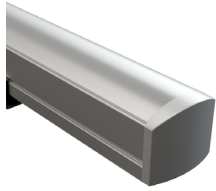
Ex : LWDY-FIE-48IN-MBK-CF-SMDBK

Product Code	Length	Aluminum Profile Colour	Lens Options	Installation								
<b>LWDY-FIE</b>												
	<b>48IN</b> 48in <b>96IN</b> 96in	<b>ACL</b> Clear Anodized <b>MBK</b> Matte Black <b>MWH</b> Matte White <b>CU</b> Custom (1)	<b>CF</b> Clear Frosted Lens <b>WF</b> White Frosted Lens <b>WO</b> White Opal Lens <b>SBC</b> Smoked Black Lens (2) <b>MBRCL</b> Matte Black Rectangular Louver <b>MWRCL</b> Matte White Rectangular Louver <b>NA</b> None	<b>3MT</b> 3M Tape <b>SMDBK</b> Surface Mounted With Bracket <b>ADJBK</b> 180° Adjustable Bracket <b>NA</b> None								
Each profile is provided with a pair of endcaps including: 1 X Endcap without Hole 1 X Endcap with Hole		(1) Specify RALK7 code	Refer to page 2 for Lens Options (2) For pixelation free visuals, Lumen Warm strongly recommends the use of 900lm/ft LEDs.	Supplied by Lumen Warm <table border="1"> <thead> <tr> <th>Length (in)</th> <th>Number of Mounting Brackets</th> </tr> </thead> <tbody> <tr> <td>0-48</td> <td>2</td> </tr> <tr> <td>48-84</td> <td>3</td> </tr> <tr> <td>84-96</td> <td>4</td> </tr> </tbody> </table>	Length (in)	Number of Mounting Brackets	0-48	2	48-84	3	84-96	4
Length (in)	Number of Mounting Brackets											
0-48	2											
48-84	3											
84-96	4											

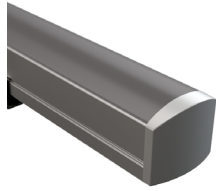
## Notes

# Technical Information

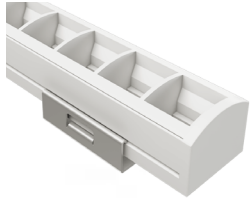
## Lens Options



**CF/WF/VO**  
Clear Frosted - White Frosted -  
White Opal Lens



**SBC**  
Smoke Black Lens



**MWRL**  
Matte White Rectangular Louver



**MBRCL**  
Matte Black Rectangular Louver

## LED Visibility & Light Loss Factor



**CF**  
Clear Frosted Lens  
Visible  
Light Loss: 8.5%



**WF**  
White Frosted Lens  
Barely Visible  
Light Loss: 23.5%



**VO**  
White Opal Lens  
Diffused  
Light Loss: 37.5%



**SBC**  
Smoke Black Lens  
Barely Visible  
Light Loss: 70%



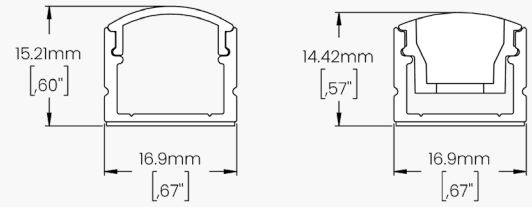
**MWRL**  
Matte White Rectangular Louver  
Visible  
Light Loss: 4%



**MBRCL**  
Matte Black Rectangular Louver  
Visible  
Light Loss: 8%

## Installation Type

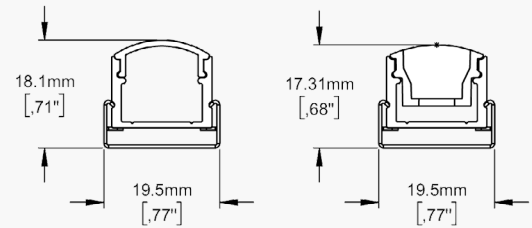
### 3M Tape



### Details and Ordering

<b>Code</b>	3MT-P9I-002
<b>Mounting</b>	Double sided tape
<b>Quantity</b>	Varies according to ordered length
<b>Notes</b>	LW recommends applying the tape to the entire length of the profile

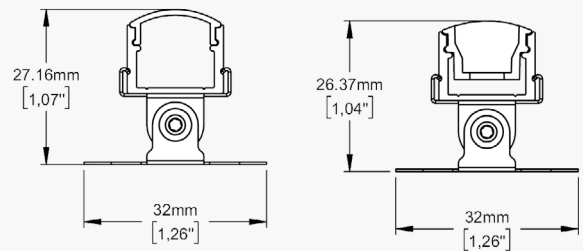
### Surface Mounted With Bracket



### Details and Ordering

<b>Code</b>	BRK-PI3-002
<b>Mounting</b>	Surface Mounted in groove with clips
<b>Quantity</b>	A bracket every 24in
<b>Notes</b>	LW recommends the use of #6 - 5/8" screws, not included, for their installation

### 180° Adjustable Bracket



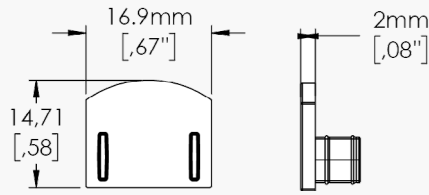
### Details and Ordering

<b>Code</b>	BRK-AI3-001
<b>Mounting</b>	Surface Mounted in groove with clips (180° pivot)
<b>Quantity</b>	A bracket every 24in
<b>Notes</b>	LW recommends the use of #6 - 5/8" screws, not included, for their installation

# Technical Information

## Endcaps

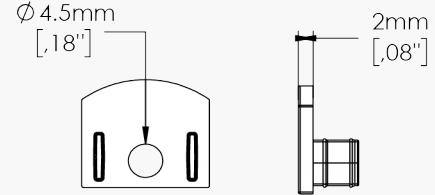
### Without Hole



#### Details and Ordering

<b>Code</b>	ECP-P13-001- _ _ _	
	To order additional endcaps to those already supplied by Lumen Warm, specify the desired colour by referring to the "Colour" section below.	
<b>Material</b>	ABS Plastic	
<b>Colour</b>	<b>MBK</b> - Matte Black <b>MWH</b> - Matte White	<b>MGR</b> - Matte Grey <b>CU</b> - Custom; Specify RALK7 code

### With Hole



#### Details and Ordering

<b>Code</b>	ECP-P13-002- _ _ _	
	To order additional endcaps to those already supplied by Lumen Warm, specify the desired colour by referring to the "Colour" section below.	
<b>Material</b>	ABS Plastic	
<b>Colour</b>	<b>MBK</b> - Matte Black <b>MWH</b> - Matte White	<b>MGR</b> - Matte Grey <b>CU</b> - Custom; Specify RALK7 code

## Available LED Strips

Static White (Click for linked document)	Lumen Output	Consumption
<a href="#">LWHPC120</a>	120lm/ft - 393.6lm/m	0.91W/ft - 3W/m
<a href="#">LWHPC290</a>	290lm/ft - 951.2lm/m	2.59W/ft - 8.5W/m
<a href="#">LWHPC420</a>	420lm/ft - 1377.6lm/m	3.51W/ft - 11.52W/m
<a href="#">LWHPC700</a>	700lm/ft - 2296lm/m	5.85W/ft - 19.2W/m
<a href="#">LWHP900</a>	900lm/ft - 2952lm/m	6.59W/ft - 21.6W/m
<a href="#">LWHE1150</a>	1150lm/ft - 3772lm/m	7.32W/ft - 24W/m
<a href="#">LWHE1400</a>	1400lm/ft - 4592lm/m	8.78W/ft - 28.8W/m
Dim to Warm (Click for linked document)	Lumen Output	Consumption
<a href="#">LWD2W480</a>	480lm/ft - 1574.4lm/m	5.27W/ft - 17.28W/m
Tunable White (Click for linked document)	Lumen Output	Consumption
<a href="#">LWTW220</a>	220lm/ft - 721.6lm/m	3.05W/ft - 10W/m
<a href="#">LWTW300</a>	300lm/ft - 984lm/m	4.57W/ft - 15W/m
RGBW (Click for linked document)	Lumen Output	Consumption
<a href="#">LWRGBW250</a>	250lm/ft - 820lm/m	4.68W/ft - 15.36W/m