

Jaxson Profile

Available in a variety of light intensities and application methods, our Low Voltage Linear Solutions are widely versatile. They can be used either for their functionality, as design elements in a room or both.



Highlights

Mounting	Recessed
Material	Aluminum Extrusion (6063-T5)
Features	Discreet, optimal diffusion & easy to install
Recommended for	Small recessed application



Dimensions

Jaxson Profile

Lens : CF/WF/WO/SBC

Louver : MBRCL/MWRCL

Aluminum Profile Colour

ACL - Clear Anodized

MBK - Matte Black

MWH - Matte White

CU - Custom; Specify RALK7 colour

Ordering Guide

Ex : LWJX-FIE-48IN-MBK-CF-RCDSB

Product Code	Length	Aluminum Profile Colour	Lens Options	Installation	
LWJX-FIE					
	48IN 48in 96IN 96in	ACL Clear Anodized MBK Matte Black MWH Matte White CU Custom (1)	CF Clear Frosted Lens WF White Frosted Lens WO White Opal Lens SBC Smoked Black Lens (2) MBRCL Matte Black Rectangular Louver MWRCL Matte White Rectangular Louver NA None	RCDSB Recessed with Spring Bracket NA None	
Each profile is provided with a pair of endcaps including: 1 X Endcap without Hole 1 X Endcap with Hole		(1) Specify RALK7 code	Refer to page 2 for Lens Options (2) For pixelation free visuals, Lumen Warm strongly recommends the use of 900lm/ft LEDs.	Supplied by Lumen Warm	
				Length (in)	Number of Mounting Brackets
				0-48 48-84 84-96	2 3 4

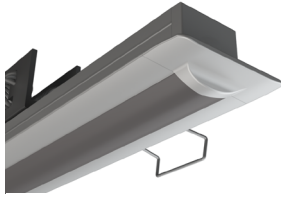
Notes

Technical Information

Lens Options



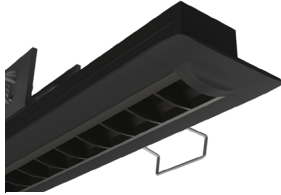
CF/WF/WO
Clear Frosted - White Frosted -
White Opal Lens



SBC
Smoke Black Lens



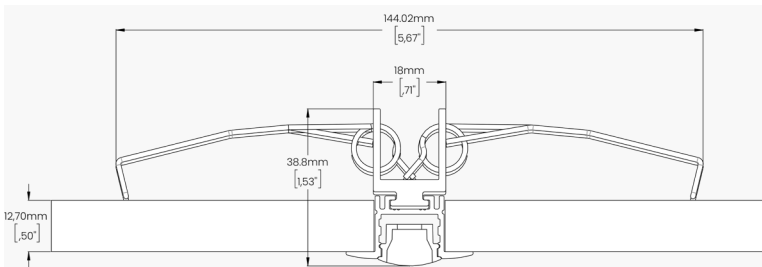
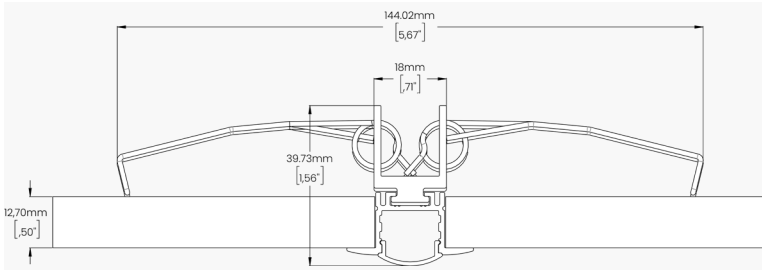
MWRCL
Matte White Rectangular Louver



MBRCL
Matte Black Rectangular Louver

Installation Type

Recessed with Spring Bracket



Details and Ordering

Code	BRK-P10-001
Mounting	Recessed
Quantity	A bracket every 24in
Notes	Handle carefully, springs can cause injuries or damage the ceiling if released abruptly

LED Visibility & Light Loss Factor



CF
Clear Frosted Lens
Visible
Light Loss: 8.5%



WF
White Frosted Lens
Barely Visible
Light Loss: 23.5%



WO
White Opal Lens
Diffused
Light Loss: 37.5%



SBC
Smoke Black Lens
Barely Visible
Light Loss: 70%



MWRCL
Matte White Rectangular Louver
Visible
Light Loss: 4%

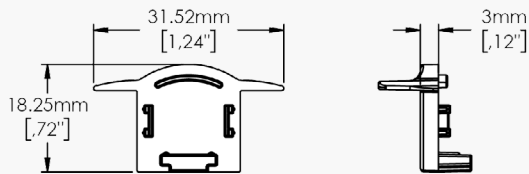


MBRCL
Matte Black Rectangular Louver
Visible
Light Loss: 8%

Technical Information

Endcaps

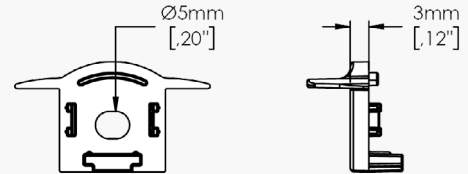
Without Hole for Lens : CF/WF/WO/MWRCL/MBRCL



Details and Ordering

Code	ECP-P13-011- _ _ _	
	To order additional endcaps to those already supplied by Lumen Warm, specify the desired colour by referring to the "Colour" section below.	
Material	ABS Plastic	
Colour	MBK - Matte Black MWH - Matte White	MGR - Matte Grey CU - Custom; Specify RALK7 code

With Hole for Lens : CF/WF/WO/MWRCL/MBRCL

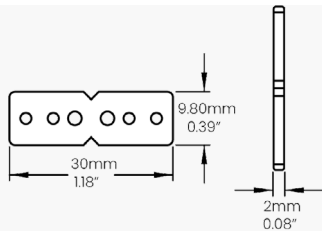


Details and Ordering

Code	ECP-P13-012- _ _ _	
	To order additional endcaps to those already supplied by Lumen Warm, specify the desired colour by referring to the "Colour" section below.	
Material	ABS Plastic	
Colour	MBK - Matte Black MWH - Matte White	MGR - Matte Grey CU - Custom; Specify RALK7 code

Joining Accessories

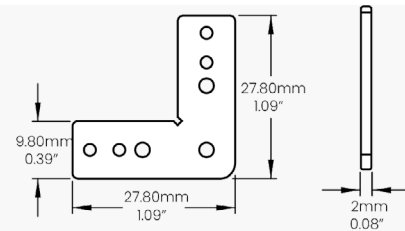
Straight



Details and Ordering

Code	JNR-P91-001
-------------	-------------

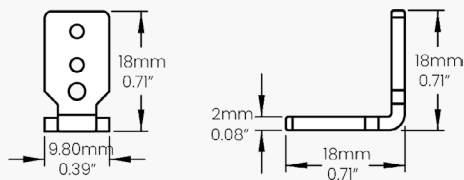
Flat Corner



Details and Ordering

Code	JNR-P91-002
-------------	-------------

Angle Corner



Details and Ordering

Code	JNR-P91-003
-------------	-------------

Technical Information

Available LED Strips

Static White (Click for linked document)	Lumen Output	Consumption
LWHPC120	120lm/ft - 393.6lm/m	0.91W/ft - 3W/m
LWHPC290	290lm/ft - 951.2lm/m	2.59W/ft - 8.5W/m
LWHPC420	420lm/ft - 1377.6lm/m	3.51W/ft - 11.52W/m
LWHPC700	700lm/ft - 2296lm/m	5.85W/ft - 19.2W/m
LWHP900	900lm/ft - 2952lm/m	6.59W/ft - 21.6W/m
LWHE1150	1150lm/ft - 3772lm/m	7.32W/ft - 24W/m
LWHE1400	1400lm/ft - 4592lm/m	8.78W/ft - 28.8W/m
Dim to Warm (Click for linked document)	Lumen Output	Consumption
LWD2W480	480lm/ft - 1574.4lm/m	5.27W/ft - 17.28W/m
Tunable White (Click for linked document)	Lumen Output	Consumption
LWTW220	220lm/ft - 721.6lm/m	3.05W/ft - 10W/m
LWTW300	300lm/ft - 984lm/m	4.57W/ft - 15W/m
RGBW (Click for linked document)	Lumen Output	Consumption
LWRGBW250	250lm/ft - 820lm/m	4.68W/ft - 15.36W/m