

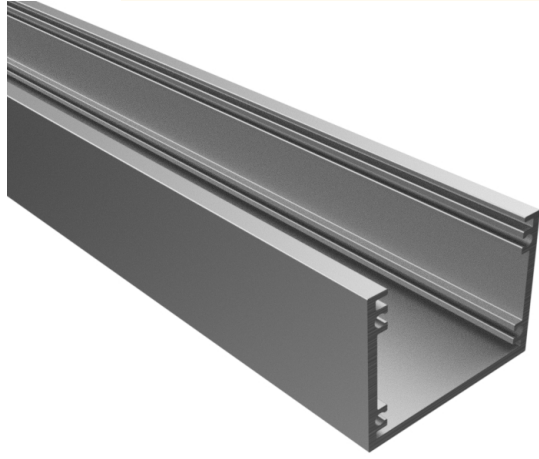
Venga Slim Profile

Available in a variety of light intensities and application methods, our Low Voltage Linear Solutions are widely versatile. They can be used either for their functionality, as design elements in a room or both.

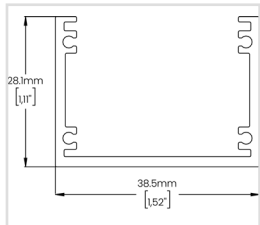


Highlights

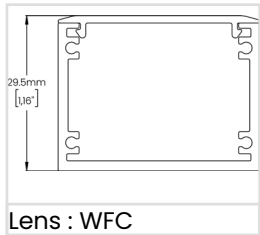
Mounting	Surface Mounted
Material	Aluminum Extrusion (6063-T5)
Features	Optimal diffusion
Recommended for	General lighting, adaptable to most spaces & linear patterns



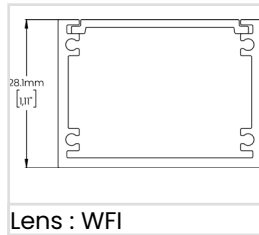
Dimensions



Venga Slim Profile



Lens : WFC

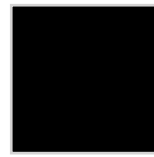


Lens : WFI

Aluminum Profile Colour



ACL - Clear Anodized



MBK - Matte Black



MWH - Matte White



CU - Custom; Specify RALK7 colour

Ordering Guide

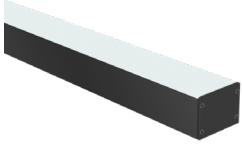
Ex : LWVGSM-FIE-48IN-MBK-WFC

Product Code	Length	Aluminum Profile Colour	Lens Options
LWVGSM-FIE	48IN 48in 96IN 96in	ACL Clear Anodized MBK Matte Black MWH Matte White CU Custom (1)	WFC White Frosted Clipped Lens WFI White Frosted Inserted Lens NA None
Each profile is provided with a pair of endcaps including: 1 X Endcap without Hole 1 X Endcap with Hole		(1) Specify RALK7 code	Refer to page 2 for Lens Options

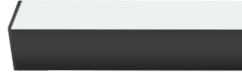
Notes

Technical Information

Lens Options



WFC
White Frosted Clipped Lens



WFI
White Frosted Inserted Lens

LED Visibility & Light Loss Factor



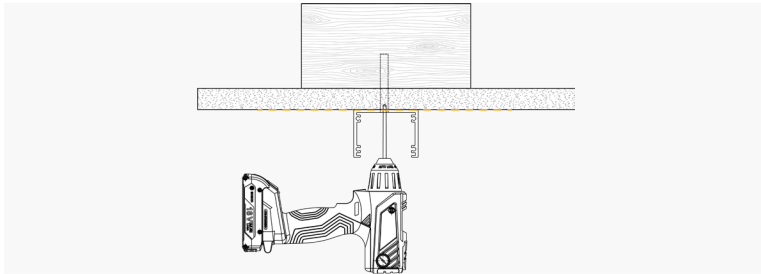
WFC
White Frosted Clipped Lens
Diffused
Light Loss: 19%



WFI
White Frosted Inserted Lens
Diffused
Light Loss: 35%

Installation Type

Surface Mounted



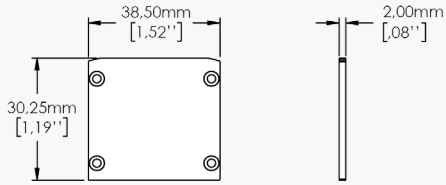
Details and Ordering

Mounting	Surface Mounted
Quantity	Varies according to ordered length
Notes	Screws for Wood, #8 size, 1-1/2" long

Technical Information

Endcaps

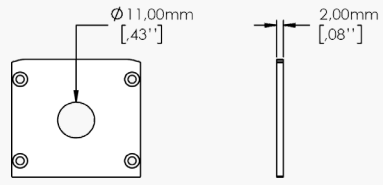
Without Hole for Lens : WFC



Details and Ordering

Code	ECP-P16-011- _ _ _	
	To order additional endcaps to those already supplied by Lumen Warm, specify the desired colour by referring to the "Colour" section below.	
Material	Aluminum	
Colour	MBK - Matte Black MWH - Matte White	MGR - Matte Grey CU - Custom; Specify RALK7 code

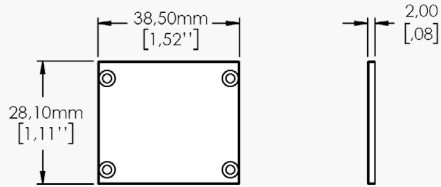
With Hole for Lens : WFC



Details and Ordering

Code	ECP-P16-012- _ _ _	
	To order additional endcaps to those already supplied by Lumen Warm, specify the desired colour by referring to the "Colour" section below.	
Material	Aluminum	
Colour	MBK - Matte Black MWH - Matte White	MGR - Matte Grey CU - Custom; Specify RALK7 code

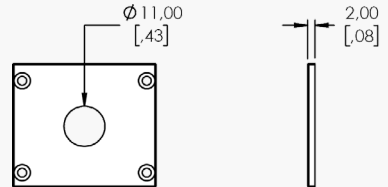
Without Hole for Lens : WFI



Details and Ordering

Code	ECP-P16-009- _ _ _	
	To order additional endcaps to those already supplied by Lumen Warm, specify the desired colour by referring to the "Colour" section below.	
Material	Aluminum	
Colour	MBK - Matte Black MWH - Matte White	MGR - Matte Grey CU - Custom; Specify RALK7 code

With Hole for Lens : WFI



Details and Ordering

Code	ECP-P16-010- _ _ _	
	To order additional endcaps to those already supplied by Lumen Warm, specify the desired colour by referring to the "Colour" section below.	
Material	Aluminum	
Colour	MBK - Matte Black MWH - Matte White	MGR - Matte Grey CU - Custom; Specify RALK7 code

Technical Information

Available LED Strips

Static White (Click for linked document)	Lumen Output	Consumption
LWHPC120	120lm/ft - 393.6lm/m	0.91W/ft - 3W/m
LWHPC290	290lm/ft - 951.2lm/m	2.59W/ft - 8.5W/m
LWHPC420	420lm/ft - 1377.6lm/m	3.51W/ft - 11.52W/m
LWHPC700	700lm/ft - 2296lm/m	5.85W/ft - 19.2W/m
LWHP900	900lm/ft - 2952lm/m	6.59W/ft - 21.6W/m
LWHE1150	1150lm/ft - 3772lm/m	7.32W/ft - 24W/m
LWHE1400	1400lm/ft - 4592lm/m	8.78W/ft - 28.8W/m
Dim to Warm (Click for linked document)	Lumen Output	Consumption
LWD2W480	480lm/ft - 1574.4lm/m	5.27W/ft - 17.28W/m
Tunable White (Click for linked document)	Lumen Output	Consumption
LWTW220	220lm/ft - 721.6lm/m	3.05W/ft - 10W/m
LWTW300	300lm/ft - 984lm/m	4.57W/ft - 15W/m
RGBW (Click for linked document)	Lumen Output	Consumption
LWRGBW250	250lm/ft - 820lm/m	4.68W/ft - 15.36W/m